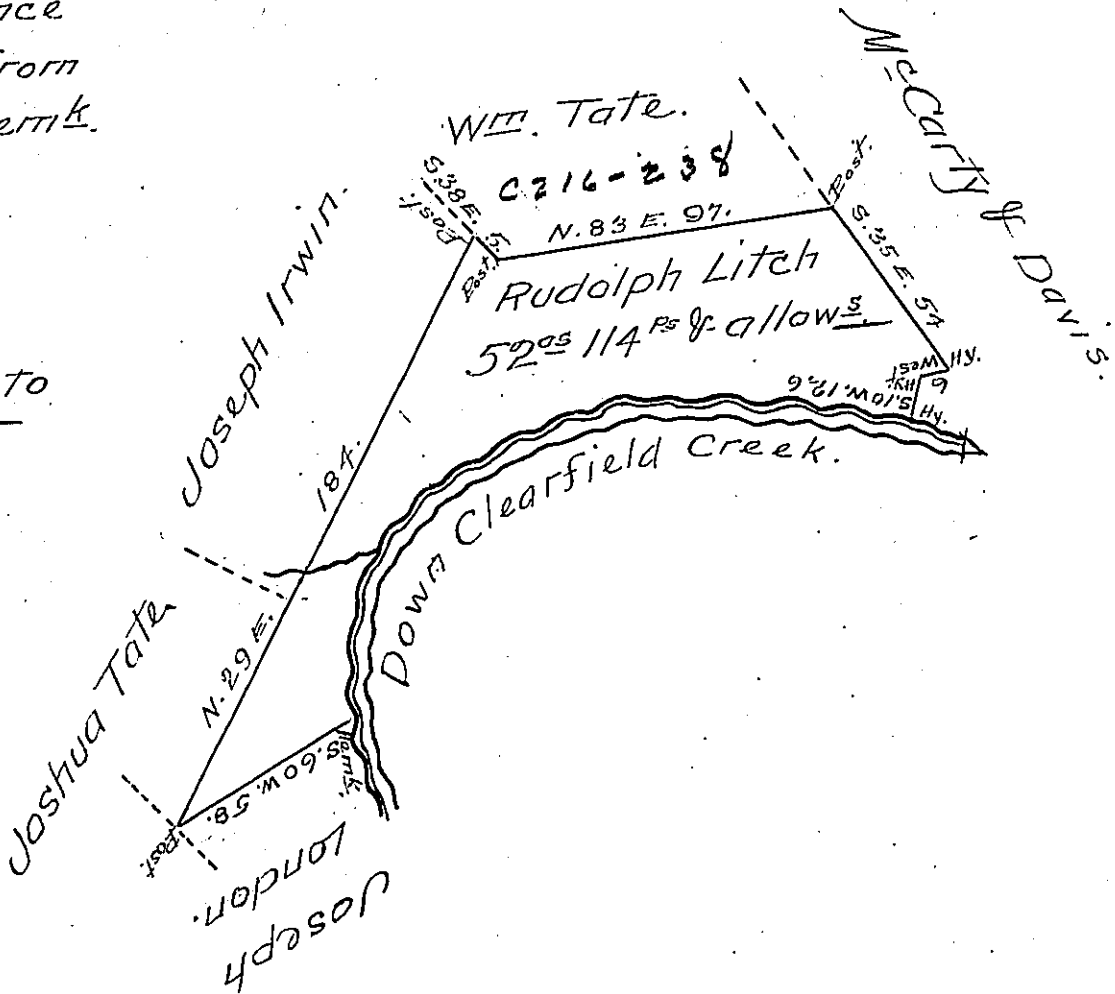


Course & Distance  
up the Creek from  
the Hy. to the Herk.

- N. 82 W. 50.
- S. 80 W. 58.
- S. 56 W. 56.
- S. 24 W. 27.
- S. 5 E 25. To  
Herk. 216.



Situate in Lawrence Township Clearfield County containing fifty two acres & one Hundred & fourteen perches & the usual allowance for Roads &c. including a small improvement begun the 15<sup>th</sup> of May 1836 but no actual settlement surveyed the 1<sup>st</sup> day of Feb. 1839 by virtue of a warrant dated the 21<sup>st</sup> day of January 1839 for 60<sup>ac</sup>.

Sam<sup>l</sup> Fulton D.S.

To John Taylor Esq.  
Surveyor General.

IN TESTIMONY that the above is a copy of the original remaining on file in the Department of Internal Affairs of Pennsylvania, made conformably to an Act of Assembly approved the 16th day of February, 1833, I have hereunto set my Hand and caused the Seal of said Department to be affixed at Harrisburg, this twenty eighth day of August 1905.

*James P. Brown*  
Secretary of Internal Affairs.